

Radiolabs

Wireless & Beyond

Installation Guide for Radiolabs USB Wifi Antennas/Adapters



PLEASE READ BEFORE ATTEMPTING INSTALLATION

Thank you for purchasing a RadioLabs USB wireless networking product. This document will guide you through the steps to install the software or drivers necessary for your RadioLabs USB Wifi Antenna or Adapter on your computer.

These instructions are for:

WaveRv - Wireless Rv Solution (purchased after June 10th 2009)

Wave Magnum - High Power USB Wifi

O2Boost - Directional USB Wifi Antenna

The Seed – Plug and Go USB Wifi System

WaveRv Marine - Wireless Marine System (purchased after May 28th 2009)

O2Connect - High Power Directional USB Panel (purchased after May 28th 2009)

This guide and the included software is not compatible with the WaveRV II Long Range USB Adapter.

Please note that you will need a USB 2.0 port to utilize any of the RadioLabs USB Wifi Adapters/Antennas listed above.

Installation Instructions for MAC Computers

The MAC software included in this CD or .zip archive is compatible with the following versions of Windows:

- OS 10.3 "Panther" (all revisions)
- OS 10.4 "Tiger" (all revisions)
- OS 10.5 "Leopard" (all revisions)

The screenshots included in this guide are from the MAC OS 10.4 version

Please note that things may appear slightly different on your system depending on your OS version. However, the installation steps will be similar regardless of your OS version.

Note: Do not insert the USB connector for your RadioLabs USB Wifi Antenna/Adapter into your MAC until prompted.

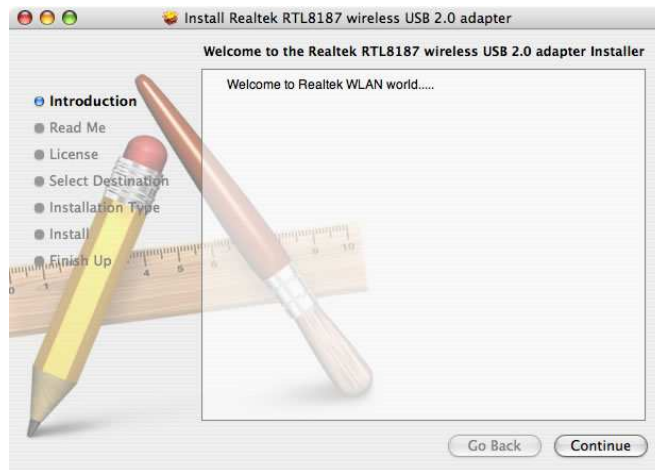
Before installing your RadioLabs device, you will need to disable or disconnect any wireless devices currently operating on your PC. This includes the Airport, PCI adapters or external USB adapters.

Your MAC does not need an Airport or built-in wifi adapter to utilize any RadioLabs USB Wifi Antenna or Adapter. All of RadioLabs' USB Wifi Antennas/Adapters have a built-in wireless card that takes the place of your existing wireless network connection.

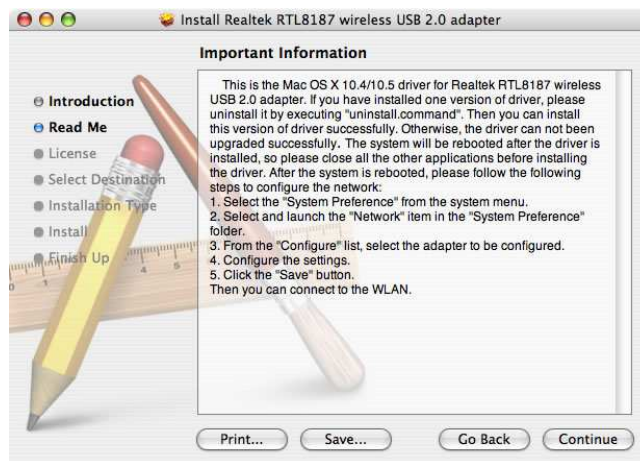
If you are using a MAC that has an Airport integrated wifi connection, please use the Airport menu (top right of the screen) or System Preferences > Network to turn the Airport off.

If you wish to use the Airport in the future, just use the Airport menu or Network icon under System Preferences to turn the Airport back on.

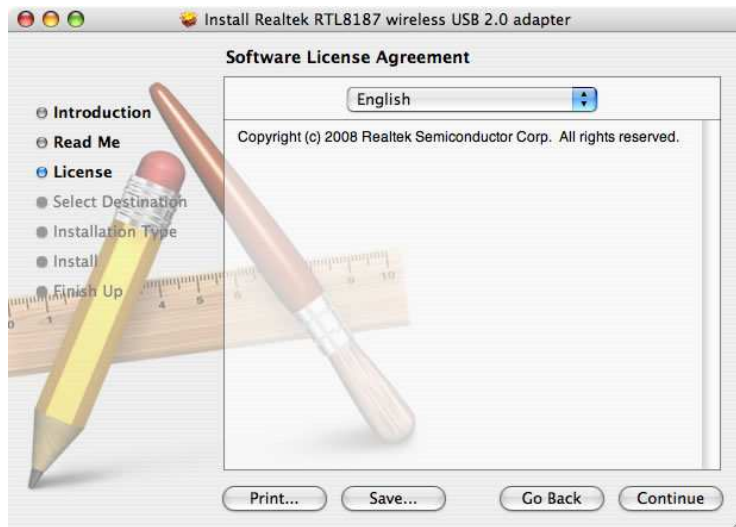
Included on this CD or .zip archive is a folder entitled **“Mac OS X Drivers and Utilities”**. Please select the appropriate folder for your operating system (OS 10.3 10.4 or 10.5) and run *Install.pkg*. This will begin the installer for your RadioLabs USB Wifi Adapter/Antenna.



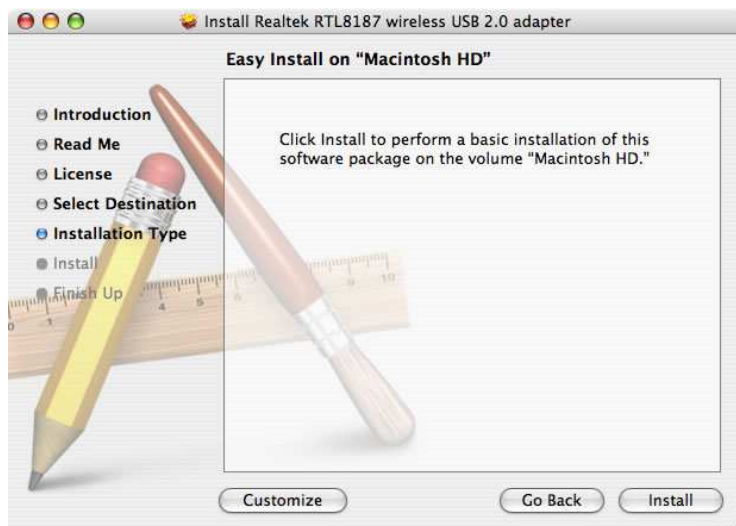
This step can be disregarded as long as you have not previously installed any software for your RadioLabs USB Wifi Antenna/Adapter. If you have attempted to install the software, please follow the instructions and uninstall the software using the *“uninstall.command”* and then start over from the beginning on this installation guide.



Please select License Agreement Language and click Continue



Click Install to continue the installation.



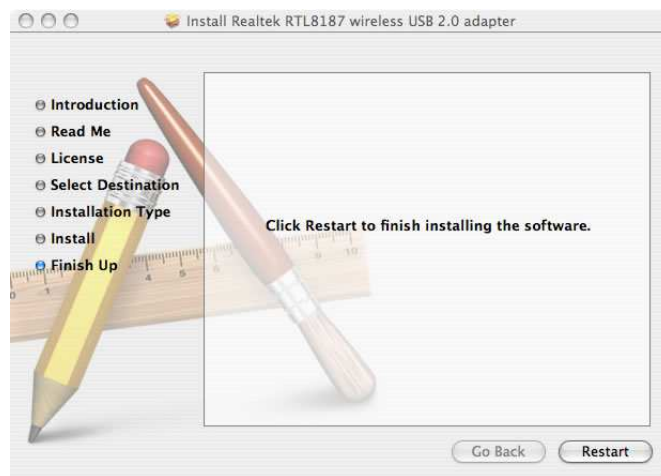
Enter the username (if necessary) and the system password to continue the installation



Select Continue Installation



Select Restart to finish the installation and reboot your MAC



Once your machine has restarted, you can connect the USB of your RadioLabs USB Wifi Adapter/Antenna connector to your MAC's USB port.

(If you have the Wave Magnum USB High Power USB Wifi Adapter, you will need to connect the small Mini-B USB Connector end of the black USB cable to the Magnum and the other end to your MAC's USB port.)

Continue to the next page to configure your network preferences for your RadioLabs USB Wifi Adapter/Antenna

The instructions will now be differentiated depending on your OS version.

When you connect the USB connector to your computer, you may see this alert, to continue, click okay. If alert does not appear, please continue to the next step.

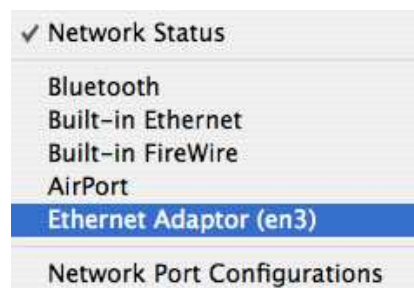


Go to System Preferences > Network.

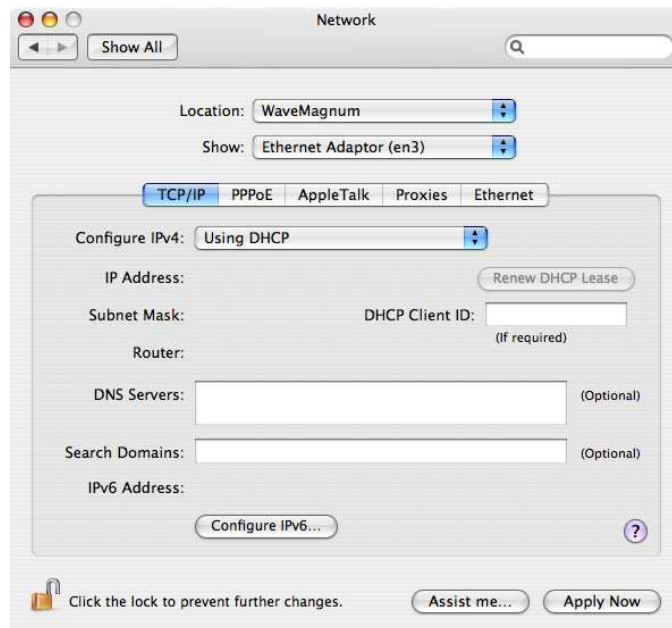
Select Location and click New Location and enter the Name of your new location. (For this instance, we have named the location "WaveMagnum") and click OK



Select the Show List and select the Ethernet Adaptor (enX) [where x is a number your MAC assigns to the device]



Click Apply Now to activate your RadioLabs USB Wifi Adapter/Antenna



Your RadioLabs USB Wifi Adapter or Antenna is now installed and ready to use. Please refer to the RadioLabs USB Device User Manual for instructions on how to use the RadioLabs Wireless USB Utility.